



FLAT FOR RENT
EVERE

Superb FURNISHED apartment – NATO District!



PROPRIÉTÉ PRIVÉE
IMMOBILIER RÉSIDENTIEL

ADRESSE

Avenue Franz Guillaume, 76
1140 Evere

PRICES

1.250 €



FLAT FOR RENT EVERE

*** Information and visits by mail : lea.lallemand@propriete-privee.be - Visits on Tuesday 08/04 *** NATO District – We offer you this superb NEW and furnished apartment of over 85 m². It consists of a spacious living room with an open kitchen that provides access to a pleasant terrace. The night area includes two spacious bedrooms, a bathroom, and a laundry room. The apartment is rented with its parking space and a beautiful cellar! The provision for charges is €85 for the maintenance of common areas and private water consumption.



eau office

Clos des Chêneaux 18A
1390 Grez-Doiceau
+32 10 816 800

office

Avenue Reine Astrid 92 bte 2
1310 La Hulpe
+32 2 216 88 00



FLAT FOR RENT EVERE

Living space	85 m ²
Year of construction	2014
Floors	1
Lift (elevator)	yes
Terrace	yes
Number of bedrooms	2
Surface area bedroom 1	14 m ²
Surface area bedroom 2	10 m ²
Number of bathrooms	1
Number of toilets	1
Cellars	yes



eau office

Clos des Chêneaux 18A
1390 Grez-Doiceau
+32 10 816 800

office

Avenue Reine Astrid 92 bte 2
1310 La Hulpe
+32 2 216 88 00



FLAT FOR RENT EVERE

Type of heating	individual
Type of window frames	vinyl
Ordinary monthly expenses	85,00
Availability	to be agreed upon



eau office

Clos des Chêneaux 18A
1390 Grez-Doiceau
+32 10 816 800

office

Avenue Reine Astrid 92 bte 2
1310 La Hulpe
+32 2 216 88 00



FLAT FOR RENT
EVERE



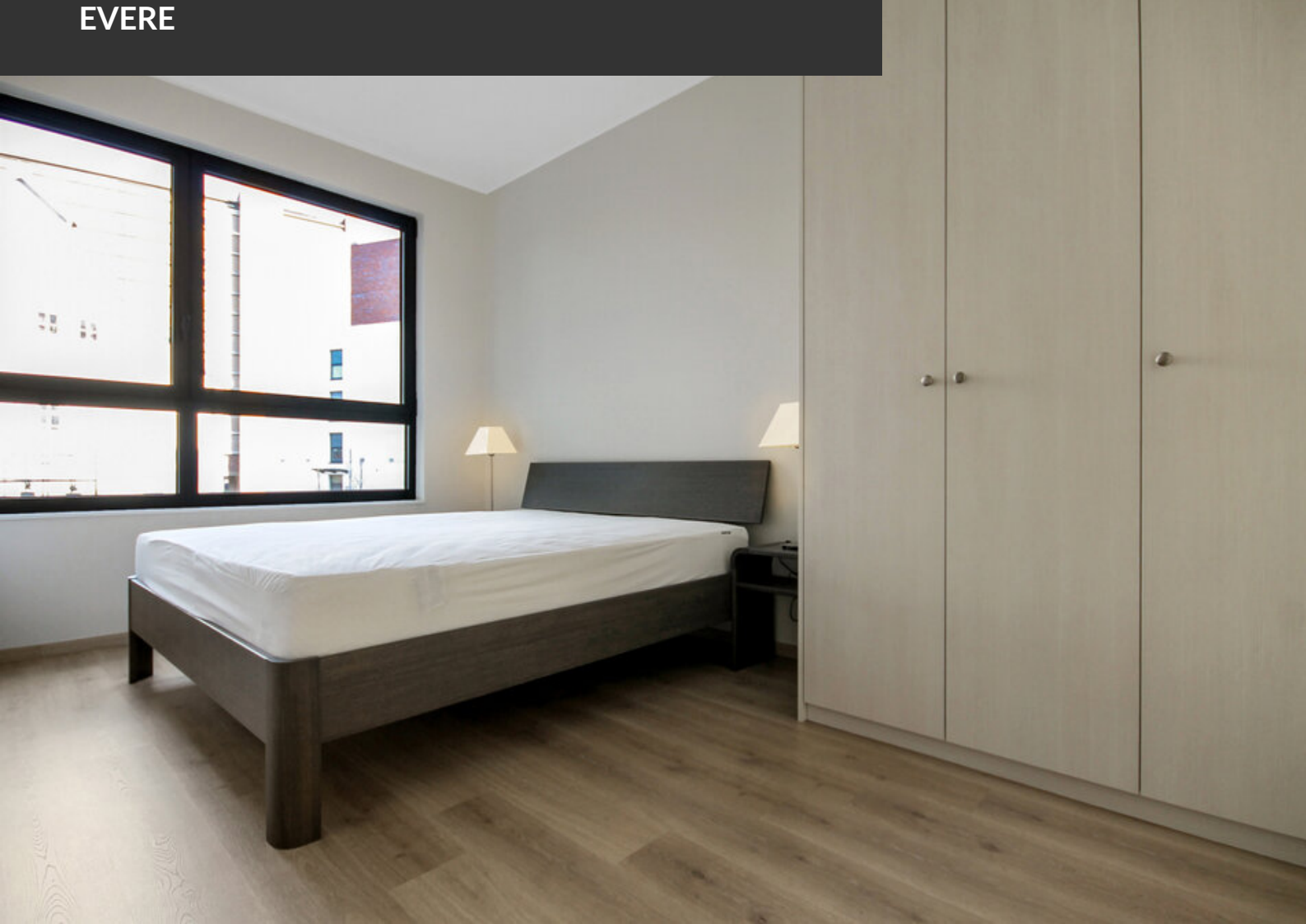


FLAT FOR RENT
EVERE





FLAT FOR RENT
EVERE





FLAT FOR RENT
EVERE





FLAT FOR RENT
EVERE





FLAT FOR RENT
EVERE